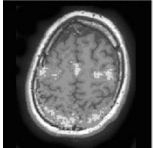


*The Center for Cognitive Medicine is
conducting research to better
understand, diagnose and treat:*

**SCHIZOPHRENIA
DEPRESSION
BIPOLAR DISORDER**
and other mental illnesses

For further information please contact us!

Center for Cognitive Medicine



University of Illinois at Chicago
Department of Psychiatry
Neuropsychiatric Institute
912 S. Wood St. Suite. 235
Chicago IL 60612
312-413-8736

Brochure

Version #3

3/13/2009

*E*ligibility

- Ages 12 to 55
- Major psychiatric disorder at or near illness onset, including schizophrenia, schizoaffective disorder, bipolar disorder, or unipolar depression
- Medically stable
- No significant history of alcohol or substance abuse
- No contraindications to MRI (i.e. cardiac pacemaker, aneurysm clip, cochlear implants, IUD, shrapnel, history of metal fragments in eyes, neurostimulators or other metal devices, weight \geq 250lbs or body size that would prevent fMRI studies, claustrophobia)

*P*rocedures

- Diagnostic Procedure and Clinical Measures
- Eye Movement testing
- Neuropsychological testing
- Possible Blood draw for genetic studies
- Possibly Functional Magnetic Resonance Imaging (fMRI) procedure

*L*ocation of Testing

- Clinical interviews, neuropsychological tests and eye movement studies are conducted at the Center for Cognitive Medicine (912 South Wood Street, Chicago)
- Brain imaging studies are performed at the Center for MR Research at the UIC Medical Center (1801 West Taylor Street, Chicago)

*P*articipant Payments

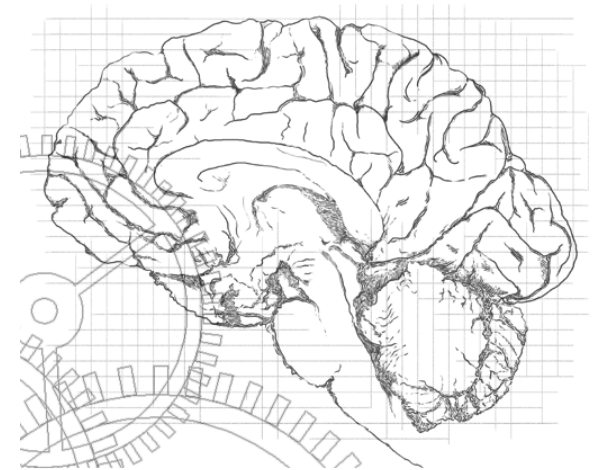
Participants will be compensated accordingly for each of the studies completed.

*C*ontact

If you would like more information or are interested in referring patients for participation in this study, please call **(312) 413-8736**. We welcome referrals, comments, questions, and requests for information.

Patient Participants Needed for Medical Research Study

*“Cognition and Brain
Functions in Psychiatric
Disorders”*



University of Illinois at Chicago
Center for Cognitive Medicine
Neuropsychiatric Institute
912 S. Wood Street Suite 235
Chicago Illinois 60612
312-413-8736

**Sponsored by the National Institute of Mental Health
and Ortho-McNeil Janssen Scientific Affairs, LLC**

Study Title

Cognition and Brain Functions in Psychiatric Disorders

Principal Investigator

John A. Sweeney, Ph.D., Director
Center for Cognitive Medicine

Specific Aims

The overall goal of this study is to learn about the etiology and pathophysiology of schizophrenia and to understand the underlying biological processes that cause cognitive problems associated with the disorder.

Procedures

Medication-free Period:

The primary goal of the protocol is to study patients while they are not taking psychiatric medication. Some patients will not be taking medications because they have only recently become ill or because they do not want to take medications. We will study these patients as soon as possible after we recruit them. Patients taking medications and suitable for a brief medication washout will be admitted to our research unit, where we will ask them to stop taking psychiatric medications for a period of time ranging

from 5 to 14 days. Research procedures will be completed during the last 2 days of the medication-free period. Only inpatients admitted to the Psychiatric Clinical Research Center (PCRC) at UIC Medical Center will be withdrawn from medication treatment to ensure appropriate monitoring by clinicians during this phase of the research protocol. Subjects may be studied as outpatients if they have not received antipsychotic medications from their treating physician in the two weeks preceding recruitment into the study.

In order to recruit a representative sample of this rare population, we will additionally include patients at or near illness onset who are not suitable for the medication-free period and need to remain on some psychiatric medication in the study.

We will consult with treating physicians throughout the protocol.

Diagnostic & Clinical Procedures:

A full psychiatric clinical assessment will be provided to patient participants. Detailed diagnostic assessments at baseline include the SCID, psychopathology assessments, neuropsychological testing, and a demographics/history assessment.

Eye Movement Studies:

The purposes of the eye movement testing are to both assess the functional integrity of the pursuit and saccadic eye movement systems, and to monitor eye movements during cognitive tasks evaluating the voluntary control of eye movements and working memory.

Functional MR Imaging:

Using the commonly employed non-invasive brain imaging method of MRI (magnetic resonance imaging) we can study brain activity during different kinds of mental task performance. This approach to brain imaging provides a new dimension to studying brain functions and brain disorders. Testing requires the patient to perform visual tasks and cognitive behavioral paradigms while relaxing comfortably in the scanner as images of the brain are acquired. If subjects do not wish to participate in or meet exclusion criteria for MR scans, they will be recruited for participation in the remaining assessments only.

Medication Regimen:

After the completion of all initial research procedures, patients who had undergone a medication-free period will be treated in a standard way following recommended practice. Patients with psychosis will receive novel antipsychotics. Non-psychotic unipolar depressed patients will be treated with any clinician-selected antidepressant.

Follow-Up Assessments:

We plan to ask participants to return for follow-up assessments during which clinical assessments, eye movement testing, cognitive testing, and magnetic resonance imaging, if applicable, will be repeated. Depending on the patient group, participants will be asked to return after 4 weeks only or after 4 weeks and 1 year.